

The Inkling

The News of First Presbyterian Church

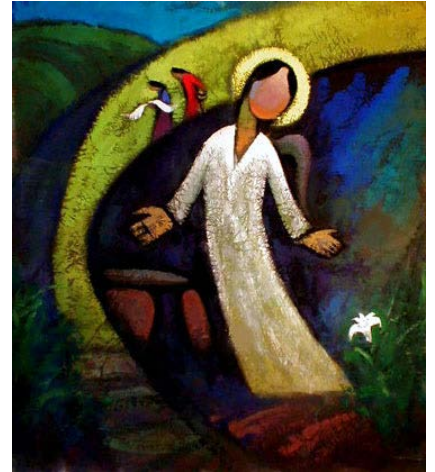
April 2013

Signs of Hope

We are Easter People! This is the Good News that greets us as we begin the month of April. Christ has been raised from death giving all of us hope for tomorrow! Signs of hope are all around us, of course. After a winter of so much snow, the signs of spring are finally making themselves known in New Haven. This is good news.

The community who make up First Presbyterian Church will have many opportunities to grow in faith, come together for worship, prayer and service, care for the creation we call home, support friends and neighbors, and live into the ways of God's justice, love, and peace. This issue of the Inkling invites everyone, young and older alike, to take a look and see how Jesus' disciples in this day are following his call.

Sunday morning worship in April brings us more stories of the resurrection appearances of Jesus to the disciples. On April 7th, we will celebrate the Sacrament of Holy Communion. Following worship there will be an opportunity for a brief service of healing. Co-Pastor Maria LaSala will lead this brief service. On April 21st, we will go "paperless" again in worship, as we recognize Earth Day. Praise God from whom all blessings flow!



He Qi, *Easter Morning*

Dinner with Kids!

Dinner with friends? Why not a dinner and evening for the kids every now and then? On April 6, from 5-10 p.m. we are having a kids-only party at First Presbyterian. There will be games, food, activities, and maybe even a movie or two. Parents are then encouraged to participate in the Dinner with Friends event or spend a little bit of quality time with a partner, spouse, friend, or good book. We need twenty kids to participate in order to hold the event so inviting friends from outside our church community is encouraged. Parents need to sign up at the Welcome Table in the Copeland room, or email Bryce at bryce.wiebe@gmail.com, or the church office at firstpresbyterianchurch@gmail.com. There is a donation of \$5 per family required at the time of registration, when we will also ask you to tell us your expected drop off and pick up time.

Dinner "Out" With Friends, April 6:

The first "Dinner Out with Friends" is scheduled for Saturday, April 6, 2013 at 6:00 p.m. This is an opportunity to spend a relaxed evening getting to know others in the congregation. Please sign up at the Welcome Table and let us know what your restaurant preference is. Suggestions are Chinese, Italian, Pizza, American or Vegetarian. For more information, contact Bonnie Sherman: shermanbonnie@att.net or Candice Gray: cmcrepeau@sbcglobal.net

Eve's Daughters Monday, April 8

Eve's Daughters, the Interfaith women's Bible study, will meet on Monday, April 8th at Congregation Mishkan Israel, 745 Ridge Rd. in Hamden. The program begins at 6 p.m. with supper provided by the women of CMI. This month we will study the stories of the women of the Exodus --- the midwives Shiphrah and Puah, Miriam, and the Pharaoh's daughter, and the women of the Resurrection --- Mary Magdalene, Joanna, and Mary the mother of James. The program will include a time for conversation and prayer. Please RSVP to the church email: firstpresbyterianchurch@gmail.com to let us know you'd like to attend.

Goody Boxes and Goody Bags!

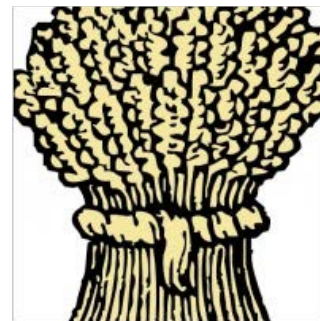
It's that time again ... the semester is drawing to a close for college and university students. We'll be mailing out care packages to the students from our congregation who study far and wide and we need your help. Tasty treats like cookies, crackers, mints, gum, and tea make perfect goodies. Please bring treats for 12 goody boxes on Sunday, April 21st. Goody Bags will be distributed on Sunday, April 28th. These will be given to the college and graduate students who worship with us Sunday after Sunday. For these bags, homemade treats are most welcome in addition to other goodies. Please bring them to the church on Sunday, April 28th. This is a fun way to help students get through finals week!

"Come Aboard the VBS Friend-ship" - Vacation Bible School

This summer's Vacation Bible School will take place from Monday, August 19 through Thursday, August 22 from 9 a.m. until 2 p.m. in the Miller Gathering Hall of First Presbyterian Church. Once again we will be joined by our friends from Church of the Redeemer (UCC), First and Summerfield UMC, and Bethesda Lutheran Church for a fun filled week of songs, crafts, and field trips as we hear stories from the Bible about friendship. VBS is open to children rising to Kindergarten through 5th grade. The cost for the four day program, which includes snacks, is \$25, with a discounted price for families with more than one child. Registration forms will be available soon, but if you'd like more information, please talk with Co-Pastor Maria LaSala.

Ecumenical Advocacy Days 2013 National Gathering

Christian advocates will gather at the 11th annual Ecumenical Advocacy Days to seek Food Justice for a Healthy World! This year's conference will begin on Friday, April 5th in Crystal City, Virginia. Titled "At God's Table: Food Justice for a Healthy World," the gathering will focus on the global food system.



In a world that produces enough food for everyone, EAD will explore the injustices in global food systems that leave one billion people hungry, create food price shocks that destabilize communities everywhere, and undermine God's creation. At God's Table, all are invited and fed, and the poorest in our

midst are given a special place. Together we will seek the abundance and equality that we find reflected in the biblical image of God's great banquet table. Inspiring speakers will offer a faith-based vision for fair food policies and practices, along with grassroots advocacy training, all culminating a Lobby Day.

EAD 2013 follows in the wake of national elections, a new Congress, a lingering Farm Bill debate, and devastating droughts and floods, all with lasting consequences for our society and world. April 5-8, 2013 will be a critical time to raise faith voices in support of ending hunger, improving nutrition, creating more just and sustainable food systems and protecting God's creation – and advocating for a "Faithful Federal Budget."

Come to EAD 2013 and help build a world in which every person, in present and future generations, has a place "At God's Table." Join the ranks of nearly ten-thousand Christian advocates who over the past eleven years have made a faithful public witness on Capitol Hill!

Art and Mary Hunt will be attending this gathering. Please keep them and all the participants in prayer.

Bill McKibben to Speak in Hamden

Promoting Enduring Peace honors environmentalist leader Bill McKibben, Professor at Middlebury College and founder of 350.org., at its annual meeting on April 18th. Come hear this inspiring national spokesperson remind us of the ways we can transform our present unsustainable system into a new way of earth care. The event will take place at 7 p.m. at the Unitarian Universalist Society on Hartford Turnpike in Hamden. Seating is limited. There is a \$10 suggested donation that will go to help further the work of Bill McKibben. Visit www.pepeace.org/2013gpa, to register.

The Lectionary Bible Study meets on Thursday Mornings at 11:00 a.m. in the Miller Gathering Hall. Each week we read and reflect on the texts for the upcoming Sunday. Bryce Wiebe leads the study.

The texts for April are:

April 7: Acts 5:27-32; Ps. 118:14-29 or Ps. 150; Rev. 1:4-8; John 20:19-31

April 14: Acts 9:1-6; Psalm 30; Rev. 5:11-14; John 21:1-19

April 21: Acts 9:36-43; Psalm 23; Rev. 7:9-17; John 10:22-30

April 28: Acts 11:1-8; Psalm 148; Rev. 21:1-6; John 13:31-35



Adult Education in April

On Sundays, April 14 and 21, join Jessica VanDenend and learn about Empathy and Social Justice. Jessica, who will receive her PhD from Union Theological Seminary this May, will talk with us about her research about how we as people of faith engage with and respond to the suffering of the wider world. How do we open our hearts to the stories of others without feeling satiated, overwhelmed, stagnated, or numb? We will also look at ideas that come from Carl Jung's analytic psychology that might prove of practical use as we seek to employ empathy in a healthy and effective manner.

On Sundays April 28 and May 5th, we will consider the use of organs, electric guitars, hymnal, and projection screens in worship. Today's churches face a lot of musical choices in articulating theology and identity. This class is a two-week look at current Presbyterian musical practices around the country, and how they fit into the larger pictures of general mainline Protestantism and the US religious scene. Week one will provide an overview of mainline Protestant musical practice within America's sacred soundscape. We'll talk about the changing role of mainline groups and their music. Week two will provide a brief background and discussion on Presbyterian music. What has the idea of uniquely Presbyterian music meant over time, and what does it mean for churches like First Presbyterian today? Deborah Justice, a life-long Presbyterian, is a postdoctoral associate at Yale's Institute of Sacred Music. With a masters in ethno-musicology from Wesleyan and a doctorate from Indiana University, Deb's research deals with how modern communities relate to musical traditions.

Join us on these April Sunday mornings at 9:30 a.m. in the Miller Gathering Hall. Coffee and tea will be provided.

Youth Group Lock-In!

The Youth Group is having a lock-in starting the evening of Friday, April 19th and ending the next morning, April 20th. We will have fun activities throughout the night and, if we must, sleep in the Miller Gathering Hall. Talk with Joel or Anna Hamaguchi for more details.

Church Potluck – April 14th

Plan to stay after worship on Sunday, April 14th for our monthly potluck. Join friends around tables to talk as we welcome Spring! Please bring a main dish, side dish, salad or dessert to share.



CCA Wheelbarrow and the Feinsein Challenge

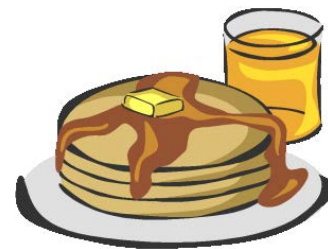
There is one more month to participate in the 16th Annual Feinsein Challenge! Our food and any cash/check donations during these months to the Christian Community Action Agency will be applied to this challenge. Please give generously.

Yale Institute of Sacred Music Exhibit

Stop by the Yale Institute of Sacred Music art gallery until April 26 to see David Michalek's exhibit "14 Stations." Working with women and men transitioning out of homelessness in New York City, Michalek juxtaposes an ancient story with a modern context. The gallery is at 409 Prospect St. and is open Tuesday – Friday from 3 to 6 p.m. and Saturday – Sunday from noon to 4 p.m. The exhibit is free and tours are available; call 203-436-5955 for more information.

Game Night ... and Pancakes ... Fun All Around

Pancakes will be served for dinner and dessert on Saturday, April 20th as friends come together to play Bingo! Due to an overwhelming request for pancakes (we had to cancel the Pancake Supper due to the February blizzard,) David Miller and his crew will be cooking up blueberry, banana, apple, and chocolate chip pancakes beginning at 5 p.m. Come for pancakes only, or spend sometime around tables hoping to yell "Bingo" and take home a prize. It will be an early night, ending by 7 p.m.



5th Annual Rock to Rock Earth Day Ride, April 20

Join a team from First Presbyterian Church for the 5th Annual Rock to Rock Earth Day Ride. Join a thousand of our neighbors bicycling from West Rock and East Rock, with celebrations on both sides of the city. Along the way, there will be food, great music, and the sights of our city's parks and neighborhoods. Riders of all levels are welcome. You can choose from 8, 20, and 62 mile routes and ride at your own pace. All routes begin at Common Ground, 358 Springside Avenue, and finish at College Woods at East Rock Park.

Register online at <https://rocktorock.donordrive.com/>. Registration fees are \$15 for riders 18 and under, \$30 for riders 19-59, and \$20 for riders 60 and over. Registration fees support the organizing partners who make Rock to Rock run: Common Ground, The Urban Resources Initiative, New Haven-Leon Sister City Project, CitySeed, Inc., and New Haven Parks Department. We are also seeking pledges from folks who can't join the ride. We can direct the funds we raise to support any one of 20+ great local organizations that work to create a greener, healthier community. For more information talk to Art and Mary Hunt or Mike Spicer and Caty Poole. Last year, Mike, Caty, and Mary did the 20 mile ride, and enjoyed great fun and good exercise, all for a good cause.

Celebrate Earth Day and Ride your Bike to Church Sunday, April 21

To celebrate Earth Day, why not ride your bike to church on April 21st? Our own Joel LaChance, a.k.a. The Goatville Cyclesmith, will ride his mobile bike repair cart to church and be available after the service to offer bike maintenance tips.

For those who find riding on Whitney Avenue intimidating, try approaching from parallel, less busy streets; Livingston Street is bicycle friendly, and you can cut through the Hooker School property on Sundays, and cross Whitney Avenue at the light on Huntington. Due to light traffic, Sunday mornings are a good time to experiment riding around New Haven's streets. For those who live too far away to easily bike to church, consider alternate ways to bring your bike and then enjoy a ride in the area after church, or back home. All the public buses have bike racks on the front, you could take the bus to downtown New Haven and then ride your bike the rest of the way. Or bring your bike on/in your car and then enjoy riding the Farmington Canal Bike trail.

For more information or questions on bicycling to church, feel free to see Martha Smith or anyone else you see pedaling into the parking lot. In case of heavy rain, we will postpone the bike activities till the following Sunday.

Columbus House Thank You

Columbus House wants to say thank you for your time and talent and making a difference during this year's Abraham's Tent program and with all the work they do. If you have participated in any activity related to Columbus House, you are welcome to attend the annual Volunteer Appreciation Lunch scheduled for Saturday, April 20th, 2013 between 11:30 am - 1:30pm. Please contact Sheree DiMario at (203) 401-4400 ext 138 or sdimario@columbushouse.org to attend.

Quinnipiac Hosts Symposium on Primary Care and the Law April 13

Dr. Andrew Morris-Singer, president and principal founder of Primary Care Progress, will deliver the keynote address at "Primary Care and the Law," an interprofessional symposium that will take place from 9 a.m. to 3 p.m. on Saturday, April 13, in the Grand Courtroom of the School of Law Center at Quinnipiac University. The symposium will bring together primary care practitioners, policymakers, attorneys and students to advance the conversation about the role of law in the delivery of high-quality primary care.

Morris-Singer is a primary care clinician, educator and advocate who works actively in the space of primary care revitalization. As president of Primary Care Progress, Morris-Singer has been instrumental in igniting an inter-professional trainee-led grassroots movement to reform primary care delivery and training.

The event is free and open to the public, but registration is required. Visit <http://www.quinnipiac.edu> to register, or e-mail healthlaw@quinnipiac.edu or talk to Jen Herbst for more information.

Abe's Tent Thank You

To the Abe's Tent Community:

With just one week left on the Abraham's Tent calendar, we want to say THANK YOU to all of you who have worked so hard to make these weeks of hospitality and shelter possible. And, we want to celebrate! Please mark your calendars for April 17th, at 6 pm at The Unitarian Society of New Haven (700 Hartford Turnpike, Hamden). You can RSVP by emailing kjlichti@gmail.com. We hope to see you there!

Dana and Kate
Yale Divinity School
Interns at Columbus House

Update from Sungduk Yun

Former YDS Intern, Sunduk Yun, passed all four of his ordination exams in January and wrote with this news. He sends his best to all of us, and hopes he will be able to return to the United States.

"We have been very busy, all four of us. Anny and Jenny started to go to school from the beginning of March. It is a neighborhood middle school in a distance of 7-8 minute drive. The school is surprisingly like the one that I attended thirty years ago. Jenny had to practice performing a perfect salutation, a full bow, to a principal, while she was standing in line in the gym with all her classmates in the same line, a standing ceremony of an hour. Now Anny and Jenny are so busy reading 2-3 pages from their textbooks, written in Korean of course, each night, and studying 3-4 new vocabulary words in every sentence. They are, however, basically happy, and excited to wear their neat school uniforms, with white blouse and blue tie, blue jacket and plaid skirt.

Younghwa is Anny and Jenny's primary dictionary every night. Anny is complaining that her mother explains too many things that are not included in her textbook, though. She drives them to the school and picks them up in the afternoon. She is attending a yoga-class three times a week, but basically is trying to adjust to the life with her in-laws.

I got to teach a Hebrew class at Seoul National University and an introductory class on the Bible at Yonsei University. I am still a part-time lecturer, but I have to go out to Seoul four days a week. It takes about an hour and a half from Paju city to Seoul with train. That means I spend three hours in train everyday! Anyway, I am grateful for this opportunity. I will be able to taste the life of a teacher in Korea, and it will help me to decide where to go later."

Prayers for Our Community

In nothing be anxious; but in everything by prayer and supplication with thanksgiving let your requests be made known unto God. (Philippians 4:6)

When you pray, offer prayers for ...

Jeff Miller, David Miller's brother, recovering from surgery.

Julie and Justin Ray, welcoming their new daughter Delia Annabel.

Richard Rendert, Joan Wells' cousin, recovering from a stroke.

The people of Syria, Egypt, and for all across the Middle East, during this time of unrest, violence, and discord.

Blanca Thiebaut and her colleague Montserrat Serra, who work for the Spanish division of Doctors Without Borders, and who have been held captive for over a year.

Jordan Matos, James Smit, and Dillon LaChance, who are all serving overseas in the armed forces.

Joe Bradley's mother, who is being treated for lung cancer.

Those who are unable to worship with us on a regular basis.

Prayers for other people and situations in need of our supplications.

April 2013

Sunday	Monday	Tuesday	Wednesday	Thursday	Friday	Saturday
	1 6:00pm Worship Committee 6:00pm Memorial Cairn	2 9:30am Musical Folk 4:00pm Musical Folk 7:30pm CLOC and Mission Committee	3 9:30am Musical Folk 4:30pm Staff Meeting	4 9:00am Yoga 11:00am Bible Study 4:00pm Musical Folk	5 10:00am Musical Folk 7:00pm Connecticut Fok	6 9:00am Yoga 9:30am Women's AA 5:00pm Dinner with Kids 6:00pm Dinner Out with Friends
7 9:30am Choir, Church School 10:45am Worship 12:00pm Friendship Hour	8 6:00pm Eve's Daughters	9 9:30am Musical Folk 4:00pm Musical Folk	10 9:30am Musical Folk 4:30pm Staff Meeting 7:00pm Choir Rehearsal	11 9:00am Yoga 11:00am Bible Study 4:00pm Musical Folk	12 10:00am Musical Folk	13 9:00am Quinnipiac Health and Law Symposium 9:00am Yoga 9:30am Women's AA
14 9:30am Choir, Church School 10:45am Worship 12:00pm Church Potluck	15 6:00pm Worship Committee	16 9:30am Musical Folk 4:00pm Musical Folk 7:15pm Session	17 9:30am Musical Folk 4:30pm Staff Meeting 6:00pm Abe's Tent Thank You Party 7:00pm Choir Rehearsal	18 9:00am Yoga 11:00am Bible Study 4:00pm Musical Folk 7:00pm Bill McKibben Lecture, Hamden	19 10:00am Musical Folk	10 8:30am Rock to Rock Ride 9:00a Yoga 9:30am Women's AA 11:30am Columbus House Lunch 5:00pm Board Games and Pancakes Overnight: Youth Group Lock-In
21 Bike to Church Sunday 9:30am Choir, Church School 10:45am Worship 12:00pm Friendship Hour	22	23 9:30am Musical Folk 4:00pm Musical Folk 7:15pm Session	24 9:30am Musical Folk 4:30pm Staff Meeting 7:00pm Choir Rehearsal	25 9:00am Yoga 11:00am Bible Study 4:00pm Musical Folk	26 10:00am Musical Folk	27 9:00am Yoga 9:30am Women's AA
28 9:30am Choir, Church School 10:45am Worship 12:00pm Friendship Hour	29	30 9:30am Musical Folk 4:00pm Musical Folk				

May 2013

Sunday	Monday	Tuesday	Wednesday	Thursday	Friday	Saturday
			1 9:30am Musical Folk 4:30pm Staff Meeting 7:00pm Choir Rehearsal	2 9:00am Yoga 11:00am Bible Study 4:00pm Musical Folk	3 10:00am Musical Folk	4 9:00am Yoga 9:30am Women's AA
5 9:30am Choir, Church School 10:45am Worship 12:00pm Friendship Hour	6	7 9:30am Musical Folk 4:00pm Musical Folk 7:30pm CLOC and Mission Committees	8 9:30am Musical Folk 4:30pm Staff Meeting 7:00pm Choir Rehearsal	9 9:00am Yoga 11:00am Bible Study 4:00pm Musical Folk	10 10:00am Musical Folk	11 9:00am Yoga 9:30am Women's AA
12 9:30am Choir, Church School 10:45am Worship 12:00pm Friendship Hour	13	14 9:30am Musical Folk 4:00pm Musical Folk	15 9:30am Musical Folk 4:30pm Staff Meeting 7:00pm Choir Rehearsal	16 9:00am Yoga 11:00am Bible Study 4:00pm Musical Folk	17 10:00am Musical Folk	18 9:00am Yoga 9:30am Women's AA
19 9:30am Choir, Church School 10:45am Worship 12:00pm Friendship Hour	20 6:00pm Worship committee	21 9:30am Musical Folk 4:00pm Musical Folk 7:15pm Session	22 9:30am Musical Folk 4:30pm Staff Meeting 7:00pm Choir Rehearsal	23 9:00am Yoga 11:00am Bible Study 4:00pm Musical Folk	24 10:00am Musical Folk	25 9:00am Yoga 9:30am Women's AA
26 9:30am Choir, Church School 10:45am Worship 12:00pm Friendship Hour	27	28 9:30am Musical Folk 4:00pm Musical Folk	29	30	31	

CO-PASTORS: BILL GOETTLER & MARIA LASALA

DIRECTOR OF MUSIC: PATRICK McCRELESS

CHRISTIAN EDUCATOR: BRYCE WIEBE

PARISH ASSOCIATE: SUE ASHER

YDS INTERN: HANNAH DREITCER

CHURCH ADMINISTRATOR: MIRIAM SAMUELSON

First Presbyterian Church

704 Whitney Avenue

New Haven, Connecticut 06511

Phone: (203) 562-5664

Fax: (203) 562-1202

Email: firstpresbyterianchurch@gmail.com

Web site: www.fpcnh.org

Christian Education for all ages

9:30 a.m.

Worship

10:45 a.m.

**First Presbyterian Church
704 Whitney Avenue
New Haven, Connecticut
06511**

Please find your e-copy on the church website at fpcnh.org! We hope to stop printing most copies of the Inking, moving to an entirely digital format. So take a moment today to check out the newsletter online.